

## *Extreme winter weather leads to higher-than-normal electric bills*

Spring has arrived, and we are enjoying the greening landscape and warmer temperatures. But the effects of February's extreme cold weather, which caused a record demand for electricity, are still lingering. That record use, combined with skyrocketing fuel costs for electricity production, means that you are likely seeing higher-than-normal electric bills.

The long stretch of frigid temperatures caused increased electricity usage across much of Arkansas, Texas and the Midwest for about five straight days. The demand for electricity was met for Arkansas' electric cooperative members with only a small, limited (less than 6,000 members at one time) curtailment, despite the dire situation that other states experienced. On Feb. 14, Arkansas Electric Cooperative Corporation (AECC), the wholesale power supplier for our co-op and 16 others within the state, asked the state's electric co-ops to voluntarily limit the use of electric service immediately and through Feb. 17.

Because of the soaring demand for natural gas, prices skyrocketed as supplies grew tight. The unusually high cost of natural gas used to generate electricity was the primary driver behind the higher-than-normal electric bills many members are receiving. Although AECC has a diverse mix of generation supplies to help lower fuel costs, a large portion of its wholesale power generation comes from natural gas. On Feb. 16, natural gas that was priced at \$1.98/MMBtu rose to approximately \$220/MMBtu. The total additional wholesale generation fuel costs for Arkansas' electric cooperatives for the month of February were about \$93 million above normal.

To help minimize the fuel cost impact, AECC's board of directors approved a plan to recover these costs on member bills over the next nine months. These costs are part of the



The Thomas B. Fitzhugh Generating Station operated on fuel oil reserves at the peak of the severe winter temperatures to shield electric cooperative members from skyrocketing natural gas costs.

fuel adder on members' electric bills. As a not-for-profit organization, you can rest assured that your local electric cooperative never profits from a members' added burden. By law, a fuel adder must go directly toward recovering the actual incremental costs of fuel and purchased wholesale energy from AECC.

While we cannot control the weather, we can help you find ways to keep your electricity costs down by making energy-saving improvements to your homes and businesses. It takes working together to make the best use of resources. In addition, C & L Electric Cooperative is always willing to work with members to make payment arrangements. As your local electric cooperative, we do everything in our power to provide safe, reliable electricity and service to you.

## Utility Disconnects Targeted to Resume on May 3, 2021

The Arkansas Public Service Commission issued an Order indicating it is considering lifting the moratorium on utility disconnects with a target date of May 3, 2021. Members impacted by the pandemic are encouraged to contact our office as soon as possible. C & L Electric Cooperative will be offering extended payment arrangements as an effort to help our members. For more information, contact the C & L Electric billing department at 870-628-4221, option 1.

The federal government's Low Income Home Energy Assistance Program (LIHEAP) provides help for qualifying members. The amount available varies on a member's income and number of people in the household. The program is currently open for applications and is granted on a first-come, first-served basis. Members can contact their county office for more information.

# SUMMARY OF THE BYLAWS OF C & L ELECTRIC COOPERATIVE CORPORATION

## ARTICLE I – MEMBERSHIP

Section 1. Any individual or Entity will become a member of C&L Electric Cooperative Corporation (the “Cooperative”) upon receipt of a Cooperative Service from the Cooperative, provided that he, she or it has first: (a) made a signed written application for membership therein; (b) agree to purchase energy from the Cooperative as hereinafter specified; (c) agreeing to comply with and be bound by the articles of incorporation, bylaws and rules and regulations of the cooperative; (d) paid the membership fee hereinafter specified; (e) provided or agrees to provide all information required by the Cooperative, which information and include photographic identification satisfactory to the Cooperative and his or her social security number or its federal tax identification number; and (f) agrees to complete any additional or supplemental documents, contrast or action required by the Cooperative.

Section 3. The term “member” shall be deemed to include married persons holding a joint membership.

Section 4. Upon the death of either spouse who is a party to a joint membership, such membership shall be held solely by the survivor.

## ARTICLE II – RIGHTS & LIABILITIES OF MEMBERS

Section 2. Members are exempt from liability for the debts of the cooperative.

## ARTICLE III – MEETINGS OF MEMBERS

Section 1. The annual meeting of members shall be held during the months of June, July, or August at such place within a county served by the Cooperative as designated by the board of directors, for the purpose of electing directors, passing on reports, and transacting other business.

Section 3. Written notice of meetings of members stating the place, day and hour of the meeting shall be delivered or mailed to each member not less than 10 days before the date of the meeting.

Section 4. One thousand (1,000) members present in person or represented by ballot shall constitute a quorum for the transaction of business at all meetings of the members.

Section 5. Each member shall be entitled to only one (1) vote upon each matter submitted to a vote of the members in good standing. All matters which are necessary to be voted on by the membership shall only be by mail as herein provided. The record date for determining the total membership and the members entitled to receive a ballot will be May 1, 2021.

## ARTICLE IV – BOARD MEMBERS

Section 1. The business and affairs of the cooperative shall be managed by a board of nine (9) members.

Section 2. Directors may be elected by a plurality vote of the members voting in the election. Each director is elected

for a term of five (5) years. The term of two directors will expire in 2021, and each five (5)

years thereafter. The cooperative area allocated to and served by the cooperative is divided into eight areas, with one (1) area represented by two (2) directors, and each of the other seven (7) areas represented by one (1) director.

Section 3. No person shall be eligible to become or remain a Board member of the Cooperative who: (a) is not a member in good standing, a bona fide resident of, and physically occupying his/her primary residence within the district of the service area of the Cooperative from which he/she shall have been or shall be elected during the six (6) consecutive months prior to the election; (b) is in any way employed by or financially interested in a competing enterprise or a business selling electric energy or supplies to the Cooperative; (c) is a current employee, or is a former employee of the Cooperative whose employment with the Cooperative terminated within six (6) years of the date for determining eligibility to become a Board member, or the spouse or child of such current or former employees; (d) is a second-degree or closer relative of an incumbent director of the Cooperative, unless the incumbent director's term will expire prior to the person becoming a Board member, or (e) in the case of an incumbent director, shall have failed to attend at least seven (7) regular or special meetings of the Board during a period of twelve (12) consecutive months without extenuating circumstances.

## NOTICE OF ANNUAL MEETING

Notice is hereby given that the Annual Membership Meeting of the C & L Electric Cooperative Corporation will be held on Thursday, June 17, 2021, at the C & L Electric Cooperative Corporation headquarters building in Star City, Lincoln County, Arkansas, beginning at 4:00 p.m. for the following purposes:

1. To pass on reports for the previous fiscal year;
2. To elect two directors to serve a term of five year each;
3. To transact such other business as may come before the meeting.

*Robert W. Floyd*  
*Secretary-Treasurer*

Positions to be filled at the June 17, 2021 Annual Meeting:  
District 1 – Corporate limits of the City of Star City, and;  
District 7– That portion of Jefferson County served by the cooperative.

Final date for submission of petitions nominating candidates for the positions to be filled is May 18, 2021.

Instructions for preparing nomination petitions may be obtained at the C & L Electric Cooperative headquarters in Star City, Arkansas on or after April 19, 2021.

# LINEWORKERS BRING THE LIGHT.

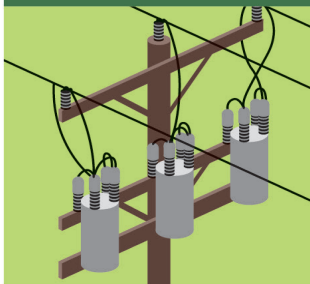
## Lineworker Appreciation Day

On April 12, remember to  
#ThankALineworker.

### The Pros and Cons of

## OVERHEAD AND UNDERGROUND POWER LINES

### OVERHEAD



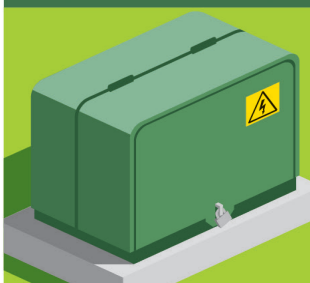
#### PROS:

- Less expensive to build and repair
- Easier to spot faults/damage
- Can be built on any terrain

#### CONS:

- Susceptible to wind, ice and snow
- More vulnerable to damage from trees and vegetation
- More vulnerable to blinks caused by animals
- Susceptible to damage from vehicle collisions

### UNDERGROUND



#### PROS:

- Less susceptible to vehicle collisions
- Not impacted by trees, wind, ice and snow
- Less vulnerable to blinks caused by animals

#### CONS:

- More expensive to build and repair
- Susceptible to flooding
- Difficult to locate faults/damage
- Vulnerable to damage from digging